



HYDRAULIC PRESS

水压机

www.tengdi.com



TODAY'S QUALITY TOMORROW'S MARKET

今天的质量 明天的市场

Your partner for productivity improvement.

COMPANY PROFILE

企业简介

Shijiazhuang Tengdi Machinery Trading Co., Ltd., located in Shijiazhuang, the capital of Hebei Province, is a high-tech enterprise integrating design, research, production, sale and service and is committed to providing reliable products and service to global customers since the first of day of incorporation. Having been certified by ISO9001, TENGDI supplies ERW pipe mill, slitting line, and cut to length line, which have passed the certification of CE and SGS.

There is a stable and strong technical team, including 30 engineers and 6 senior engineers. Following the concept of independent innovation, the team has optimized and absorbed the essence of China's machinery manufacturing industry, while referring to advanced foreign technologies to design a series of production lines with simple operation and convenient maintenance, which will help our customers to realize the dream of low investment and high return.

During the past years, TENGDI team has accumulated rich experience in negotiation, and can timely and accurately understand the specific needs of investors. We can also rely on our comprehensive capabilities to meet the diversified needs of investors. As a result, TENGDI has won unanimous praise from clients, and has gradually grown into an important supplier for global customers.

Following the international strategy, TENGDI has set up three overseas offices serving customers in 50 countries and regions in Middle East, Eastern Europe and South America. The products are widely used in oil pipeline, steel structure, low-pressure fluid, automobiles and furniture.

In the future, TENGDI will adhere to the tenet that "today's quality is tomorrow's market" to cultivate the famous brand of TENGDI MACHINERY so that the world will love what is made in China.

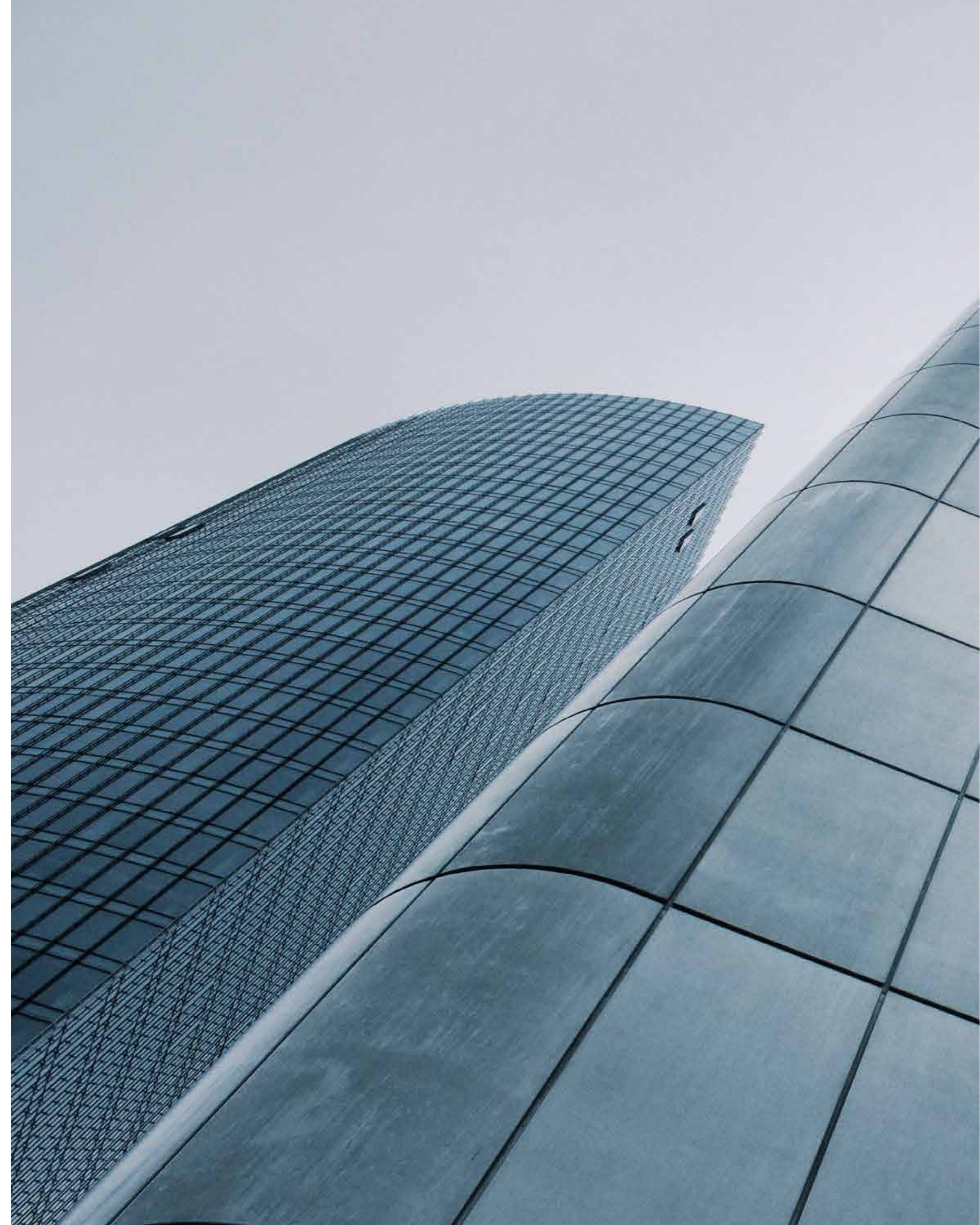
石家庄腾迪机械设备有限公司位于河北省会石家庄，是一家集设计研发、生产销售和服务于一体的高新技术企业，成立伊始，一直致力于为全球客户提供可靠的产品和服务。公司通过了ISO9001认证。腾迪的主要产品有ERW焊管生产线、带钢卷纵剪线、横切线等，产品通过了CE认证、SGS认证。

腾迪拥有一支稳固、强大的技术团队。工程师30余人，高级工程师6人。技术团队遵循公司自主创新的先进理念，优化吸收了中国机械制造业之精华，同时借鉴国外先进技术，设计了一系列操作简单、维护方便的生产线。为客户实现了低投资，高收益的梦想。

经过多年的发展，腾迪团队积累了丰富的谈判经验，能够及时准确地了解投资者的具体需求，并利用腾迪的综合实力来满足投资者的多样化需求。因此，腾迪赢得了用户的一致好评，并逐渐成长为全球客户的重要供应商。

腾迪实施国际化战略，在海外设立了三个办事处，服务于中东、东欧、南美等50个国家和地区的客户。产品广泛应用于石油管道、钢结构、低压流体、汽车、家具等行业。

在未来发展中，腾迪将继续以“今天的质量，明天的市场”为宗旨，打造腾迪机械知名品牌形象。让世界热爱中国造！



ENTERPRISE QUALIFICATION

企业资质



Honor comes from hard work.

Each recognized qualification certificate is the crystallization of our hard work, and each honor is a signpost and a journey.

We will also take each honor as a starting point, and continue to forge ahead and surpass ourselves.

The team independently developed and obtained more than 20 patents, passed ISO9001 quality management system certification and environmental management system certification.

荣誉源于用心。

每一份认可的资质证书都是凝聚我们奋力拼搏的结晶，每一份荣誉都是一个路标，一次历程。

我们也将以每次荣誉为起点，不断锐意进取，超越自我。

团队自主研发获得20多项专利，通过ISO9001质量管理体系认证，环境管理体系认证。

ADVANTAGES

优势特点

High compression accuracy: high-resolution pressure sensors are used to monitor the compression process, real-time display and record compression values, compression curves, and leak tube indications. When there is a leakage of the pipe, the alarm can be realized, and the semi-automatic re-inspection can be realized, so as to avoid being mistaken for the leakage of the steel pipe due to equipment reasons.

Multiple observation methods: Equipped with shockproof pressure gauge. Manual observation, pressure gauge indication, large screen display pressure curve, large screen display pressure value, touch screen pressure value and leak pipe alarm, etc.

Simple re-inspection: Once a leak occurs, manual intervention can realize semi-automatic re-inspection, and re-inspection can be repeated many times.

Simple operation and convenient maintenance: the test pressure head is easy to install and disassemble, and the sealing ring is easy to replace.

Low cost of use: The main parts of the system are made of stainless steel, and the stainless steel parts below 89 have test pressure head bushings, valve flanges, and sealing flanges. The 219 test pressure head is galvanized to prevent rust.

Improve service life: It has double sealing function of pre-sealing and self-sealing (Tengdi's original design), the sealing ring has no contact with the steel pipe before sealing, completely avoids edge wear, and greatly improves the service life of the sealing ring.

Prevent iron filings from scratching the sealing ring: the bushing of the water outlet chamber of the jacking pipe is in the form of a filter to prevent large iron filings from entering the water outlet chamber and scratching the sealing ring. Small iron filings will not stay when passing through the vertical sealing cavity. Greatly improve the service life of the sealing ring.

The water flow is orderly: when the pipe is pulled back, the water in the pipe flows on the workbench, and there is a fixed water channel flowing to the ditch.

Compact structure: the water inlet pipe jacking workbench and pressurized workbench are made into an integrated structure, and the hydraulic solenoid valve and pneumatic solenoid valve of the water outlet workbench are arranged near the cylinder body. All internal pipelines are installed before leaving the factory, which greatly reduces the construction time and workload of on-site installation. Standardized design and installation, elegant appearance, easy maintenance.

打压准确率高: 采用高分辨率压力传感器, 对打压过程进行监测, 实时显示和记录打压数值、打压曲线、漏管指示。出现漏管时报警, 可以实现半自动复检, 避免因设备原因误认为是钢管有漏点。

观察方式多: 配防震压力表。人工观察、压力表指示、大屏幕显示压力曲线、大屏幕显示压力数值、触摸屏压力数值和漏管报警等。

复检简单: 一旦出现漏管, 人工干预一下, 即可实现半自动复检, 而且可以重复多次复检。

操作简单, 维护方便: 试压头安装拆卸方便, 更换密封圈简单。

使用成本低: 本系统涉水主要部件采用不锈钢材质, 89以下不锈钢部位有试压头衬套、阀门法兰盘、封堵法兰盘。219试压头采用镀锌防锈。

提高使用寿命: 具有预密封和自密封双重密封功能 (腾迪独创设计), 密封之前密封圈与钢管无接触, 完全避免边缘磨损, 大大提高密封圈使用寿命。

避免铁屑划伤密封圈: 顶管出水腔衬套采用过滤网形式, 避免大铁屑进入出水腔, 划伤封堵密封圈。小铁屑通过垂直封堵腔不会停留。大大提高封堵密封圈使用寿命。

水流有序: 退顶管时, 管内水流在工作台上, 有固定水道流向水沟。

结构紧凑: 进水顶管工作台和增压工作台做成一体结构, 出水工作台液压电磁阀和气动电磁阀都安排在缸体附近。出厂之前所有内部管路都安装完成, 大大减少现场安装施工时间和工作量。标准化设计和安装, 美观大方, 维护方便。



CLASSIFICATION

水压机分类

Ordinary straight seam welded pipe hydraulic press, with a pressing length of 6 meters and a pressing pressure of 3-6 MPa.
普通直缝焊管水压机, 打压长度6米, 打压压力3-6兆帕。

规格 Specification (mm)	60	76	114	219	273	325	508
管径范围 Diameter range	20-60	42-76	76-114	114-219	140-273	165-325	219-508
打压压力 Suppress pressure	2-7MPa	2-7MPa	2-6MPa	2-6MPa	2-5MPa	2-5MPa	2-5MPa
最佳工位数 The best number of stations	6-10	4-8	2-6	1-4	1-3	1-2	1
单循环周期 Single Cycle	25/seconds 25秒	30/seconds 30秒	40/seconds 40秒	60/seconds 60秒	120/seconds 120秒	240/seconds 240秒	300/seconds 300秒
最佳密封 Best Seal	端封 End seal	端封 End seal	端封/径封 End seal/Diameter seal	径封 Diameter seal	径封 Diameter seal	径封 Diameter seal	径封 Diameter seal
最大拉力 Maximum Pull							

The classification of hydraulic machine specifications is based on the steel pipe pressing requirements, and the classification is based on the pressing pressure and steel pipe diameter.

1. Ordinary straight seam welded pipe hydraulic press, with a pressing length of 6 meters and a pressing pressure of 3-6 MPa.
2. Medium and low pressure line pipe hydraulic presses, with a compression length of 4.5-16 meters, 6-12 meters, etc., and a pressure of 10-22 MPa.
3. High-pressure hydraulic press, with a pressing length of 6-12 meters and a pressing force of 30-60 MPa.
4. Ultra-high pressure hydraulic press, with a pressing length of 6-12 meters and a pressing force of 40-120 MPa.

Medium and low pressure line pipe hydraulic press, the compression length is 4.5-16 meters, 6-12 meters, etc., and the pressure is 10-22 MPa.

中低压管线管水压机, 打压长度4.5-16米, 6-12米等, 打压10-22兆帕。

规格 Specification (mm)	89	114	219	273	325
管径范围 Diameter range	20-89	42-114	89-219	114-273	165-325
打压压力 Suppress pressure	10-22	10-22MPa	5-22MPa	5-22MPa	5-20MPa
最佳工位数 The best number of stations	1-2	1	1	1	1
单循环周期 Single Cycle	80/seconds 80秒	100/seconds 100秒	240/seconds 240秒	3000/seconds 3000秒	600/seconds 600秒
最佳密封 Best Seal	径封 Diameter seal	径封 Diameter seal	径封 Diameter seal	端封 End seal	端封 End seal

水压机规格分类, 是根据钢管打压需求进行分类, 分类按打压压力和钢管直径进行分类

普通直缝焊管水压机, 打压长度6米, 打压压力3-6兆帕。

中低压管线管水压机, 打压长度4.5-16米, 6-12米等, 打压10-22兆帕。

高压水压机, 打压长度6-12米, 打压30-60兆帕。

超高压水压机, 打压长度6-12米, 打压40-120兆帕。

The production cycle of each specification (end seal or radial seal is used to seal the nozzle, the pressing pressure is ≤ 10 MPa, and the pressure holding time is 5 seconds).

各规格生产节拍(采用端封或径封方式密封管口, 打压压力 ≤ 10 兆帕, 保压时间5秒)。

序号 No.	型号 Type	工位数 Number of stations	打压规格 Suppress Specification	打压速度 (根/小时) Pressing speed (pcs/hour)	班产量(10小时) Class Output (10 hours)
1	219-2	2	4 Inches	200	2000 pcs
			5 Inches	180	1800 pcs
			6 Inches	150	1500 pcs
			8 Inches	120	1200 pcs
2	89-8	8	1.2 Inches	900	9000 pcs
			1.5 Inches	850	8500 pcs
			2 Inches	800	8000 pcs
			2.5 Inches	750	7500 pcs
			3 Inches	700	7000 pcs
3	50-8	8	4 Decimeter	900	9000 pcs
			6 Decimeter	900	9000 pcs
			1 Inches	900	9000 pcs
			1.2 Inches	900	9000 pcs
			1.5 Inches	900	9000 pcs

Main body configuration table of hydraulic press
水压机主体配置表

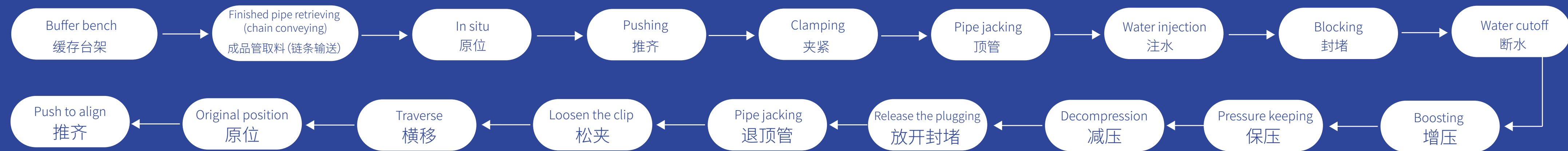
机型 Type	钢管规格 Steel pipe specification (mm)	水泵功率 Pump power	液压功率 Hydraulic power	移送功率 Transfer power	推齐功率 Push power	合计总功率 Total power
219-2	4-8 Inches	2×45KW	2×30KW	4KW	1.0KW	160KW
89-8	1.2-3 Inches	2×30KW	2×30KW	4KW	1.0KW	130KW
50-8	0.4-1.5 Inches	2×30KW	2×30KW	4KW	1.5KW	130KW

CONFIGURATION

PRODUCTION LINE PROCESS

生产线工艺流程

Basic process 基本流程



Semi-automatic re-inspection process 半自动复检流程



- 1. Independent pressurization and pressure maintenance:** During the pressurization test, each steel pipe test system operates independently without interference with each other; when a leak occurs, this station stops the sequential action and alarms, and other stations continue to complete the sequential action.
- 2. Pressurization and pressure maintenance form:** each steel pipe is injected with water independently, blocked independently, cut off water independently, pressurized independently and maintained pressure.
3. A separate oil cylinder is used to propel the test pressure head, and the end seal is automatically sealed tightly, and each station does not affect each other.
4. During the pressure test process, manual, semi-automatic re-inspection, and automatic three controls can be switched at will, which is convenient for re-inspection, avoiding the leakage of equipment gaskets for steel pipe leakage, and facilitating troubleshooting of equipment failures. When there is a pipe leakage alarm, you can choose to alarm shutdown or alarm continuous operation.
5. The pressure sensor is used to automatically detect the oil-water pressure, and the detection accuracy is high.
6. Liquid crystal digital display of pressure test value, intuitive and reliable; pressure holding time can be set arbitrarily, controlled by the console panel.
7. The pressure test process is controlled by PLC, which can automatically record the results of each test; the display screen can be set and display related parameters; the time pressure parameters and quality control number touch screen are all set.
- 8. Man-machine interface:** It adopts industrial touch all-in-one man-machine interface, with flexible parameter setting, comprehensive status display, and direct programming function and remote transmission program function.

- 1.独立增压保压:打压试验时,各钢管测试系统独立运行,相互之间不受干扰;出现漏管时,此工位停止时序动作,并报警,其它工位继续完成时序动作。
- 2.增压、保压形式:每根钢管独立注水、独立封堵、独立断水、独立增压和保压。
- 3.试压头推进采用单独油缸,端封自动封紧,各工位之间不互相影响。
- 4.试压过程手动、半自动复检、自动三种控制随意切换,方便复检,避免因设备密封垫泄露误认为钢管泄露,便于排除设备故障。出现漏管报警时,可以选择报警停机或报警连续工作。
- 5.采用压力传感器自动检测油水压力,检测精度高。
- 6.压力测试值液晶数字显示,直观可靠;保压时间任意设定,操作台面板控制。
- 7.试压过程 PLC 控制,可自动记录每次试验结果;可实现显示屏设置和显示相关参数;时间压力参数和品控编号触摸屏全部设置完成。
- 8.人机界面:采用工控触摸一体机人机界面,参数设置灵活,状态显示全面,并具有直接编程功能远程传输程序功能。

PRODUCT DISPLAY

产品展示



THANKS

Tengdi is looking forward to your joining!



TENGDI